



Personal lighting solutions provider for safe diving



BORN TO CONQUER



www.orcatorch.com



ORCA TORCH



Introduction

Orcatorch Technology Limited is an integrated company specialized in R&D, manufacture, sales and marketing of high performance LED flashlights. We have our own R&D center, CNC machines, production assembly lines, as well as testing labs.

Brand Culture

Being named after the Orca, inheriting the excellent characteristics of the Orca and combined with world advanced technology, OrcaTorch has developed a series of outdoor flashlights which are of high brightness, long beam distance, long runtime, high waterproofness, high impact resistance, convenient operation etc. OrcaTorch advocates the spirit of "follow your heart and just do it", we would love to explore the wonders of the world, feel the excitement of challenge and enjoy the freedom of life together with all outdoor adventurers.



LED

OrcaTorch lights adopt CREE LED, which is well-known as environmentally friendly, long lifetime and durable. CREE LED has a lifespan of over 50,000 hours, with 10 times luminous efficiency as the normal LEDs.

Circuit

OrcaTorch lights use the high efficiency constant current circuit, which working with the best LED, ensure maximum conversion of the limited electricity to light. Instead of getting dimmer as the battery goes down, OrcaTorch lights will keep a certain brightness until the battery level is totally down.

Optic design

OrcaTorch lights use alloy aluminum reflectors with professional optical analysis, which ensures the light beam be delivered out evenly and efficiently. Toughed glass with two-side coating is also used, the anti-abrasive coating outside provides great scratch-resistance while the anti-reflective coating inside reduce the light loss. Besides that, OrcaTorch dive lights are equipped with 4 mm super thick toughed glass with high pressure resistance under water.

Construction

OrcaTorch lights are designed with a robust construction to ensure good heat dissipation, impact resistance to 1 meter, and IPX-8 waterproofness. Every OrcaTorch dive light has to pass 150 meters high water pressure test.

Manufacturing process

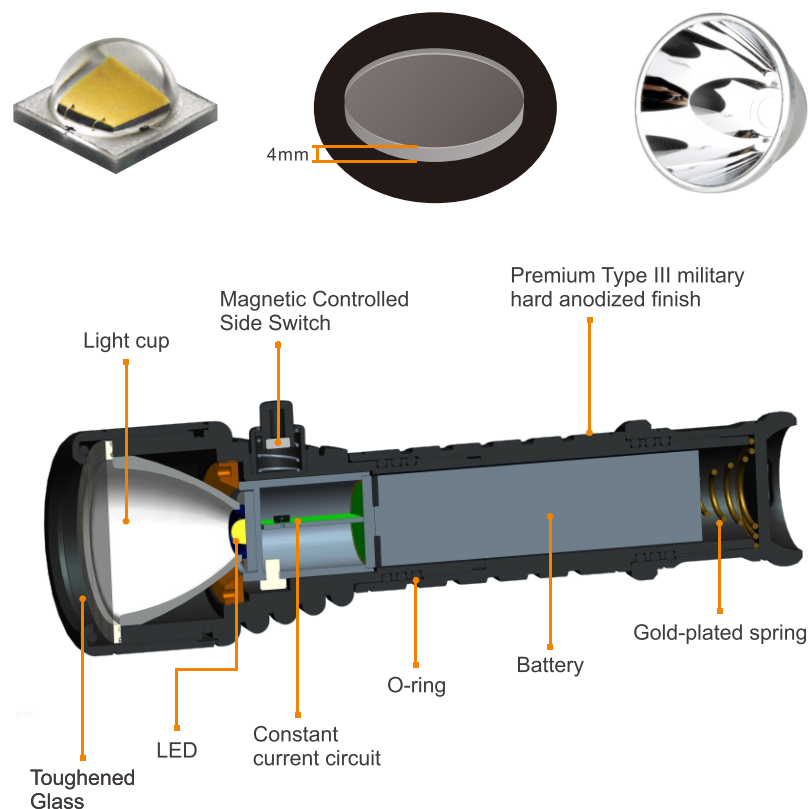
OrcaTorch lights use aircraft-grade aluminum AL-6061-T6 with light weight and high strength. All lights adopt premium Type III military hard-anodized finish which is better anti-abrasive than normal anodization and performs well in extreme environment. We also upgrade the finish of diving light to latest diamond grade seawater-corrosion-resistance hard anodized finish which is thicker and denser than normal Premium Type III military hard anodization, making the light surface as tough as diamond to protect the light from seawater corrosion.

Testing standard

OrcaTorch's stated data has been measured according to the international flashlight test standards (ANSI/NEMA FL1) under laboratory conditions.

Warranty

We will replace products afflicted with manufacturing defects within 30 days of purchase and repair a light free of charge within 24 months (12 months for dive lights and accessories) of purchase if problems develop under normal use. You may provide your OrcaTorch Warranty Card, purchase invoice, receipt or other evidence from the sellers when you purchasing our lights and contact your dealers directly for warranty service, and OrcaTorch will provide dealers with service support.



NEW PRODUCTS
—COMING SOON—

ORCATORCH D860



ORCATORCH D860 is a 4000 lumens dive light with three Cree XHP50 LEDs. It has direct charging function and power indicator. The locking function of the switch avoids accidental use. The handle with special holes allows the light to be attached to various devices according to use.



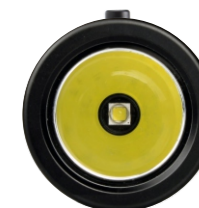
ORCATORCH D900V

ORCATORCH D900V is a video light specially designed for underwater photographer. It features four colors within one light: Red, UV, Neutral white with 120° wide beam and Cool white with 10° spot beam. Also with its direct charging system and power indicator, it would be your smartest lighting tool underwater.

D500+ Max 1000 lumens

This portable dive light is equipped with a totally sealed magnetic controlled side switch which not only eradicates the switch leaking problem but also provides flexible operation underwater.

ANSI/NEMA FL1	High	Middle	Low	Strobe
Output	1000 Lumens	425 Lumens	85 Lumens	1000 Lumens
Runtime	1h30min	4h10min	18h30min	/
LED	Cree XM-L2(U4) LED			
Battery options	1*18650/2*CR123A/2*16340 batteries			
Dimension	152mm(Length) x 28mm(Diameter) x 45mm(Head)			
Net weight	216g (excluding battery)			
Accessories	O-ring, wrist strap, lanyard			



D500+



D500V+

D510 Max 900 lumens

OrcaTorch D510 is a portable flashlight with a mechanically head rotary switch for technical diving use. The mechanically rotary switch offers high reliability underwater. Using three C batteries, it keeps a great balance between high output and long runtime.

ANSI/NEMA FL1	Mode
Output	900 Lumens
Runtime	4h
LED	Cree XM-L2(U2) LED
Battery options	3*C batteries
Dimension	209mm(Length) x 35mm(Diameter) x 49mm(Head)
Net weight	313g (excluding battery)
Accessories	O-ring, arm strap, lanyard



D520 Max 1000 lumens

ORCATORCH D520 is a palm-sized diving light with a mechanically rotary switch. Using the USA CREE XM-L2(U4) neutral white LED, its max output can reach 1000 lumens, meanwhile the 5000K LED color temperature provides superb color rendition.



color:



ANSI/NEMA FL1	Mode
Output	1000 lumens
Runtime	2h
LED	CREE XM-L2(U4)
Battery options	1*18650/2*CR123A/2*16340 batteries
Dimension	134.5mm(Length) x 24mm(Diameter) x 30mm(Head)
Net weight	113.5g (excluding battery)
Accessories	18650 battery, charger, O-ring, lanyard

D550 Max 970 lumens

OrcaTorch D550 is smaller and more portable than D500+. The tail magnetic switch offers multiple choices on modes to meet different needs.



ANSI/NEMA FL1	High	Low	Strobe
Output	970 Lumens	367 Lumens	970 Lumens
Runtime	2h5min	5h45min	/
LED	Cree XM-L2(U4) LED		
Battery options	1*18650 Li-ion battery		
Dimension	144mm(Length) x 25.4mm(Diameter) x 40mm(Head)		
Net weight	183g (excluding battery)		
Accessories	18650 battery, charger, O-ring, wrist strap, lanyard		

D560 Max 630 lumens

ORCATORCH D560 is a mini diving flashlight with only 9 cm length. Its max output can reach 630 lumens by using a single 14500 battery, and the longest runtime is 1h25min by using one AA battery. The light can rotate 360° angle with Orcatorch MX05 mask mount. Every diver deserves a D560.



color:



ANSI/NEMA FL1	AA battery	14500 battery
Output	165 Lumens	630 Lumens
Runtime	1h25min	1h
LED	Cree XM-L2(U4) LED	
Battery options	1*AA	1*14500 battery
Dimension	92mm(Length) x 20mm(Diameter) x 24mm(Head)	
Net weight	47.5g (excluding battery)	
Accessories	O-ring, lanyard	

D800 Max 2100 lumens

OrcaTorch D800 is a high power dive light with mechanically tail rotary switch for technical diving use. Using three USA CREE LEDs and powered by two 26650 batteries, the light can reach an amazing 2100 lumens output.



ANSI/NEMA FL1	Mode
Output	2100 Lumens
Runtime	3h20min
LED	CREE LED
Battery options	2*26650 batteries
Dimension	222mm(Length) x 34mm(Diameter) x 66mm(Head)
Net weight	462g (excluding battery)
Accessories	2*26650 batteries, charger, O-ring, lanyard

D810 Max 950 lumens

OrcaTorch D810 is a dive light with high output, reliability, and portability. The mechanically head rotary switch offers high reliability underwater. Powered by one 26650 Li-ion battery, it can reach 950 lumens output with one single LED.



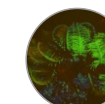
ANSI/NEMA FL1	Mode
Output	950 Lumens
Runtime	3h10min
LED	Cree XM-L2(U2) LED
Battery options	1*26650 Li-ion battery
Dimension	146mm(Length) x 34mm(Diameter) x 50mm(Head)
Net weight	262g (excluding battery)
Accessories	26650 battery, charger, arm strap, O-ring, lanyard

OrcaTorch D810V is specially designed for underwater photography, 120 degrees super wide beam angle with no hot spot.



D810

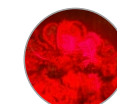
D810V



D810-UV
(UV LED)



D810-B
(Blue LED)



D810-R
(Red LED)

OrcaTorch also provide options of UV, Blue, Red LEDs instead of cool white LED of D810.

D830 Max 800 lumens

ORCATORCH D830 is a magnetic controlled dive light powered by three AA batteries. The magnetic sliding switch provides simple operation with just a motion of the thumb. It adopts the latest USA CREE XM-L2(U4) LED with three brightness levels, max 800 lumens output and over 20 hours runtime.



ANSI/NEMA FL1	High	Middle	Low
Output	800 Lumens	300 Lumens	65 Lumens
Runtime	2h52min	3h30min	20h
LED	Cree XM-L2(U4) LED		
Battery options	3* AA batteries		
Dimension	133mm(Length) x 38mm(Diameter) x 49mm(Head)		
Net weight	290g (excluding battery)		
Accessories	lanyard, O-ring, spare magnetic switch		



D820V Max 1600 lumens

ORCATORCH D820V is a compact USB charging video light. It has 120 degrees super wide floodlighting with no blind angle for underwater photography. D820V offers three kinds of light sources: Neutral white, UV and Red, which not only helps your photography or videography in the dark water but also can create amazing fluorescence of marine organisms. The unique designed titanium alloy side button switch provides easy operation underwater.



ANSI/NEMA FL1	High	Low	Red	UV
Output	1600 Lumens	550 Lumens	250 Lumens	-
Runtime	2h	4h	3h25min	6h40min
LED	4*neutral white, 2*red and 2*UV LED			
Battery options	1*rechargeable battery			
Dimension	153mm(Length) x 30mm(Diameter) x 45mm(Head)			
Net weight	250g (excluding battery)			
Accessories	rechargeable battery, USB cable, ball joint, lanyard, O-rings			



D620 Max 2700 lumens

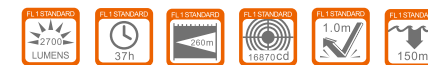
ORCATORCH D620 is a primary canister dive light specially designed for underwater adventure. The newly designed switch can be locked when rotated 90 degrees, which not only offers easy and reliable operation but also avoid turning on the light accidentally. The included easy-pack adjustable rotary Goodman handle is easy to be assembled by hand.

ANSI/NEMA FL1	High	Middle	Low
Output	2700 Lumens	800 Lumens	150 Lumens
Runtime	2h30min	8h50min	37h
LED	Cree XHP70		
Battery options	4*18650 Li-ion batteries		
Dimension	Light head: 83mm(Length) x 50mm(Diameter) Canister: 113mm(Length) x 54mm(Diameter)		
Net weight	681g (excluding battery)		
Accessories	Four 18650 batteries, charger, handle, O-rings		



D620

D620V



OrcaTorch D620V is specially designed for underwater photography, 120 degrees super wide beam angle with no hot spot.

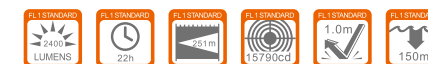
D611 Max 2400 lumens

OrcaTorch D611 is a primary canister dive light upgraded from D610. It adapts only one Cree XHP70 LED but delivers max 2400 lumens amazing output. OrcaTorch's unique magnetic switch offers multiple choices on modes to meet different needs.

ANSI/NEMA FL1	High	Middle	Low
Output	2400 Lumens	830 Lumens	180 Lumens
Runtime	2h10min	6h36min	22h
LED	Cree XHP70		
Battery options	2*26650 Li-ion batteries		
Dimension	Light head: 82mm(Length) x 50mm(Diameter) Canister: 194mm(Length) x 40mm(Diameter)		
Net weight	580g (excluding battery)		
Accessories	2*26650 batteries, charger, handle, O-ring		



color:



D611

D611V

OrcaTorch D611V is specially designed for underwater photography, 120 degrees super wide beam angle with no hot spot.

WR10 Max 950 lumens

OrcaTorch WR10 is the first flashlight with wireless charging system and intelligent recognition technology. It features the wireless charging system and can automatically stop charging when fully charged. It will recognize power failure or the remove of the charging cradle and automatically turn on for emergency use.

ANSI/NEMA FL1	Turbo	High	Middle	Low	Strobe	SOS
Output	950 Lumens	350 Lumens	50 Lumens	2 Lumens	950 Lumens	950 Lumens
Runtime	2h40min	7h	55h30min	550h	/	/
LED	Cree XM-L2(U2) LED					
Battery options	1*26650 / 18650 Li-ion battery					
Dimension	155.5mm(Length) x 35mm(Diameter) x 45mm(Head)					
Net weight	243g (excluding battery)					
Accessories	Charging cradle, car charger, 26650 battery(5000mAh), 18650 battery sleeve, O-ring					



T30 Max 1000 lumens

OrcaTorch T30 is an intelligent rechargeable tactical flashlight. With a standard USB cable, the light can be charged conveniently by any daily device with a USB port such as mobile phone adapters, computers, power banks, cars.



ANSI/NEMA FL1	Turbo	High	Middle	Low	Strobe	SOS
Output	1000 Lumens	380 Lumens	60 Lumens	4 Lumens	1000 Lumens	1000 Lumens
Runtime	2h30min	5h10min	35h	470h	/	/
LED	Cree XPL (V3) LED					
Battery options	1*18650 battery					
Dimension	160mm(Length) x 25.4mm(Diameter) x 40mm(Head)					
Net weight	167g (excluding battery)					
Accessories	USB cable, O-ring, holster, lanyard					



T20 Max 980 lumens

OrcaTorch T20 is a high power tactical flashlight with tactical tail switch and front side switch system. When the flashlight is turn-off, you can momentarily turn on the flashlight by lightly pressing the tail switch; when the light is on, you can change the modes by side switch.

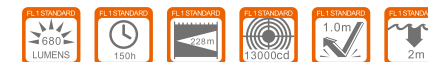
ANSI/NEMA FL1	Turbo	High	Middle	Low	Strobe	SOS
Output	980 Lumens	350 Lumens	50 Lumens	2 Lumens	980 Lumens	980 Lumens
Runtime	1h35min	3h	22h20min	275h	/	/
LED	Cree XM-L2(U2) LED					
Battery options	1*18650 / 2*CR123A / 2*16340 batteries					
Dimension	153mm(Length) x 25.4mm(Diameter) x 40mm(Head)					
Net weight	183g (excluding battery)					
Accessories	O-ring, holster, lanyard					



T10 Max 680 lumens

OrcaTorch T10 is a high power tactical flashlight with tactical tail switch and rear side switch system. When the flashlight is turn-off, you can momentarily turn on the flashlight by lightly pressing tail switch, or get strobe mode by pressing the side switch directly.

ANSI/NEMA FL1	Turbo	High	Middle	Low	Strobe	SOS
Output	680 Lumens	260 Lumens	30 Lumens	8 Lumens	680 Lumens	680 Lumens
Runtime	1h50min	4h10min	41h50min	150h	/	/
LED	Cree XM-L2(U2) LED					
Battery options	1*18650 / 2*CR123A / 2*16340 batteries					
Dimension	145mm(Length) x 25.4mm(Diameter) x 34mm(Head)					
Net weight	128g (excluding battery)					
Accessories	O-ring, holster, lanyard					



T11 Max 190 lumens

ORCATORCH T11 is an ultra-compact EDC LED flashlight specially designed for the police and soldier. Using only one AA battery, it delivers max 190 lumens output and max 60 hours long runtime.

ANSI/NEMA FL1	Turbo	High	Middle	Low	Strobe	SOS
Output	190 Lumens	80 Lumens	30 Lumens	10 Lumens	190 Lumens	190 Lumens
Runtime	2h36min	7h48min	19h48min	60h	/	/
LED	Cree XP-G2(R5) LED					
Battery options	1*AA battery					
Dimension	105mm(Length) x 23mm(Diameter) x 25mm(Head)					
Net weight	54.4g (excluding battery)					
Accessories	O-ring, holster, lanyard					



Specifications

Model	LED	Max Output	Max Runtime	Modes	Waterproof	Dimension	Net Weight	Battery	Model
Diving Series									
D500+	Cree XM-L2(U4)	1000 Lumens	18h30min	3	150m	152X28X45(mm)	216g	1*18650 / 2*CR123A / 2*16340	D500+
D510	Cree XM-L2(U2)	900 Lumens	4h	1	150m	209X35X49(mm)	313g	3*C	D510
D520	Cree XM-L2(U4)	1000 Lumens	2h	1	150m	134.5X24X30(mm)	113.5g	1*18650 / 2*CR123A / 2*16340	D520
D550	Cree XM-L2(U4)	970 Lumens	5h45min	3	150m	144X25.4X40(mm)	183g	1*18650	D550
D560	Cree XM-L2(U4)	630 Lumens	1h25min	1	150m	92X20X24(mm)	47.5g	1*AA / 1*14500	D560
D611	Cree XHP70	2400 Lumens	22h	3	150m	light head:82X50(mm) canister:194X40(mm)	580g	2*26650	D611
D620	Cree XHP70	2700 Lumens	37h	1	150m	light head:83X50(mm) canister:113X54(mm)	681g	4*26650	D620
D800	Cree LED	2100 Lumens	3h20min	1	150m	222X34X66(mm)	462g	2*26650	D800
D810	Cree XM-L2(U2)	950 Lumens	3h10min	1	150m	146X34X50(mm)	262g	1*26650	D810
D810-R	Cree Red LED	170 Lumens	4h	1	150m	146X34X50(mm)	262g	1*26650	D810-R
D810-B	Cree Blue LED	55 Lumens	4h	1	150m	146X34X50(mm)	262g	1*26650	D810-B
D810-UV	UV LED	3 Lumens	10h	1	150m	146X34X50(mm)	262g	1*26650	D810-UV
D820V	4*neutral white, 2*red and 2*UV LED	1600 Lumens	6h40min	4	150m	153X30X45(mm)	250g	1*rechargeable battery	D820V
D830	Cree XM-L2(U4)	800 Lumens	20h	3	150m	133X38X49(mm)	290g	3*AA	D830
Wireless Charging Series									
WR10	Cree XM-L2(U2)	950 Lumens	550h	6	IPX-8	155.5X35X45(mm)	243g	1*26650 / 1*18650	WR10
Tactical Series									
T11	Cree XP-G2(R5)	190 Lumens	60h	6	IPX-8	105X23X25(mm)	54.4g	1*AA	T11
T10	Cree XM-L2(U2)	680 Lumens	150h	6	IPX-8	145X25.4X34(mm)	128g	1*18650 / 2*CR123A / 2*16340	T10
T20	Cree XM-L2(U2)	980 Lumens	275h	6	IPX-8	153X25.4X40(mm)	183g	1*18650 / 2*CR123A / 2*16340	T20
T30	Cree XPL(V3)	1000 Lumens	470h	6	IPX-8	160X25.4X40(mm)	167g	1*18650	T30

ORCA TORCH



26650



RC01



M03



Tray with handles



MX05



Torpedo



14500



C4



ZJ18



ZJ15



Bracket-28
Bracket-34



AS01
WS01



18650
(3000mAh,3400mAh)



C2



MX01
MX02



ZJ13



ZJ19



SH01
SH02
SH03