

**PERSONAL LIGHTING SOLUTIONS
PROVIDER FOR SAFE DIVING**

ORCA TORCH

PRODUCT CATALOGUE
BORN TO CONQUER

2023



/OrcaTorch



www.orcatorch.com

ORCATORCH TECHNOLOGY LIMITED

Tel: +86-755-33560383 Fax: +86-755-29454989 Email: info@orcatorch.com www.orcatorch.com
Address: 7F, Building 6, Rundongsheng Industrial Park, Gushu, Xixiang, Baoan, Shenzhen, China (518102)

www.orcatorch.com

INTRODUCTION



OrcaTorch is a brand that specializes in designing and manufacturing high-quality dive lights for underwater enthusiasts. OrcaTorch was founded in 2014 and is based in Shenzhen, China.

OrcaTorch's founders are a group of diving enthusiasts who were not satisfied with the performance of the dive lights available on the market. They decided to create their own brand to produce reliable, high-quality dive lights that would meet the needs of serious divers and underwater photographers.

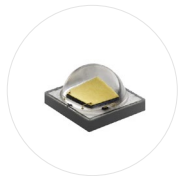
Our brand's name, OrcaTorch, was inspired by the orca, a powerful and intelligent marine predator, and the torch, a symbol of light and illumination. This name reflects our company's commitment to producing powerful, reliable lights that can illuminate the darkest depths of the ocean.

Since its inception, OrcaTorch has been dedicated to innovation and quality. OrcaTorch invests heavily in research and development to create dive lights that are not only powerful and durable but also user-friendly and easy to operate.

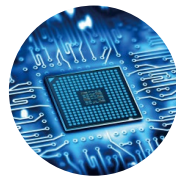
Today, OrcaTorch is recognized as one of the leading brands in the diving industry. Its products are used by professional divers and underwater photographers around the world, and OrcaTorch continues to push the boundaries of what is possible with underwater lighting technology.



PRODUCT ADVANTAGES



CREE LED, Environment friendly, long lifetime and durable
50000 hours lifespan, 10 times as efficient as the ordinary LEDs.



High-efficiency constant current circuit instead of PWM circuit
constant brightness without flicker.



Two sides coated toughened glass with high water pressure resistance.
Water pressure resistant construction, depth rated to 150 meters.



Alloy aluminum reflector with professional optical analysis.

MANUFACTURING PROCESS

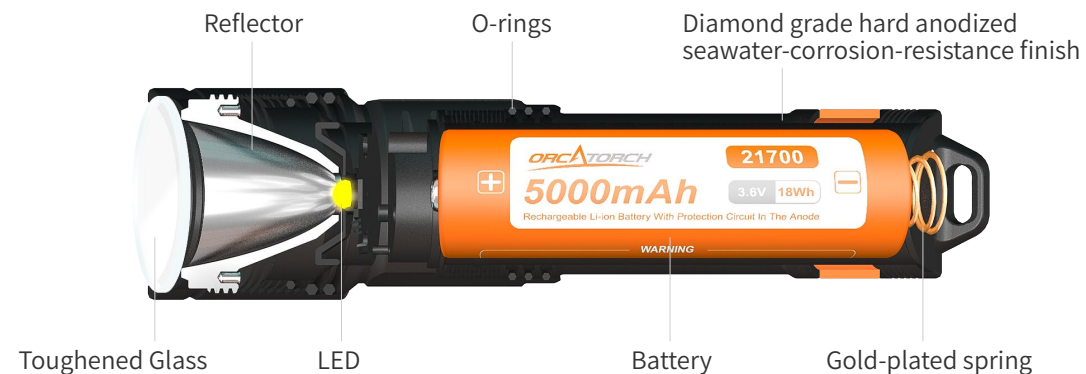
OrcaTorch lights use aircraft-grade aluminum AL-6061-T6 with light weight and high strength. All lights adopt premium Type III military hard-anodized finish which is better anti-abrasive than normal anodization and performs well in extreme environment. We also upgrade the finish of diving light to latest diamond grade seawater-corrosion-resistance hard anodized finish which is thicker and denser than normal Premium Type III military hard anodization, making the light surface as tough as diamond to protect the light from seawater corrosion.

TESTING STANDARD

OrcaTorch's stated data has been measured according to the international flashlight test standards (ANSI/NEMA FL1) under laboratory conditions.

WARRANTY

We will replace products afflicted with manufacturing defects within 30 days of purchase and repair a light free of charge within 12 months of purchase if problems develop under normal use. If you register your OrcaTorch lights through our official website www.orcatorch.com, you will get extra 12 months and totally 2 years warranty.





Factory Building



Reception



CNC Workshop



30 CNC Equipments



CNC Workshop



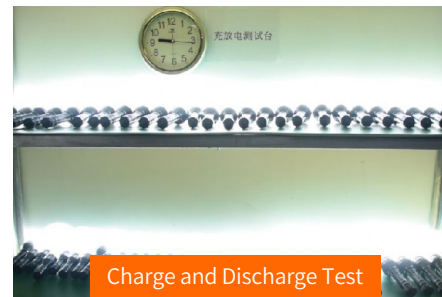
R&D Center



Product Design



Aging Test



Charge and Discharge Test



8 Assembly Lines



Lumen Test Equipment



Laser Engraving Machine



The Annual Capacity Of 1 Million Pieces



Warehouse



Packaging

ORCATORCH D910

Max 4000 lumens

MAIN FEATURES:

- Output Max 4000 Lumens, Runtime 3 hours
- Super Focus Beam Angle 6°
- Magnetic fast charging system
- LED indicator displays the battery remaining charge
- Water pressure resistant construction, depth rated to 150 meters



COMING SOON



*The above data may be changed in the future according to the actual situation.

ORCATORCH DC20

Max 3000 lumens

ORCATORCH



USB Type-C Port

MAIN FEATURES:

- Uses Luminus LED, max 3000 lumens
- USB Type-C charging
- Uses 1 * 21700 Li-ion rechargeable battery
- 6° beam angle
- Easy operation with side titanium alloy push-button switch
- Water pressure resistant construction, depth rated to 150 meters

*The above data may be changed in the future according to the actual situation.

COMING SOON

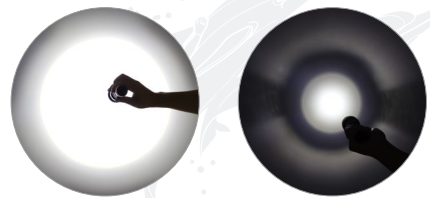


ORCATORCH ZD02

Max 2800 lumens

MAIN FEATURES:

- Uses CREE LED, max 2800 lumens
- Beam angle adjustable from 7°- 80°
- Uses 1 * 21700 Li-ion rechargeable battery
- Easy operation with side titanium alloy push-button switch
- Water pressure resistant construction, depth rated to 150 meters



Flood 80°

Spotlight 7°

*The above data may be changed in the future according to the actual situation.



Beam Angle Adjustable from 7°-80

COMING SOON

RECREATIONAL DIVE LIGHTS

ORCATORCH





NEW



P13 TD01



P14 D520

NEW



P15 D530



P16 D550



P17 D560



P18 D560-GL/RL



P19 D570-GL/RL



P20 D580



P21 D700



P22 D710



P23 SD01/SD03

ORCATORCH MAZU TD01

Max 1200 lumens



MAIN FEATURES:

- LUMINUS LED, Max 1200 lumens
- 180° adjustable bracket
- High heat dissipation, can be used underwater and on land
- Big rotary switch offers higher convenience
- Compatible with commonly-used sports cameras brackets including Gopro
- Can be mounted on helmets or worn on the wrist(with help of head strap)
- Water pressure resistant construction, depth rated to 150 meters



Clockwise Rotation:
Main White Light(High-Low)



Counterclockwise Rotation:
Auxiliary Red Light(High-Low-Signal)



18650 3400mAh
Micro-USB battery

TECHNICAL PARAMETERS

Output: 1200 lumens (White - High), 450 lumens (White-Low)
50 lumens (Red - High), 15 lumens (Red - Low), 25lm(signal red)

Runtime: 1h 45mins (White-High), 3h 15mins (White-Low)
2h 30mins (Red-High), 8h 45mins (Red-Low), 8h50mins(signal red)

Dimension: 97.8mm (Length) x 32mm (Tube Diameter)

Net weight: 129g(Including battery)

Accessories: 1* Head Strap, 1*18650 battery,1*USB-Micro USB charging cable,
2*fixed screws, 1* Lanyard, 3* Spare O-rings, 1* Bracket

MAIN FEATURES:

- CREE LED, Max 1000 lumens
- Uses 1*18650/2*CR123A/2*16340 batteries
- Mechanical head rotary switch offers high reliability underwater
- 12° beam angle
- Water pressure resistant construction, depth rated to 150 meters



CREE LED



18650 3400mAh
Micro-USB battery

TECHNICAL PARAMETERS

Output: 1000 lumens

Runtime: 2h

Beam Distance: 250m(On land) **Intensity:** 14300cd

Dimension: 134.5mm(Length) *24mm(Diameter) *30mm(Head)

Net weight: 113.5g(Excluding battery)

Accessories: 1*18650 battery, 1*USB-Micro USB charging cable, Charger, Lanyard,
Spare O-rings

ORCATORCH D520

Max 1000 lumens



ORCATORCH D530

Max 1300 lumens

ORCATORCH



Side Titanium Alloy Button Switch
With Battery Indicator



Micro-USB rechargeable
18650 Li-ion battery



Single LED Options:
Cold White, Natural White 3a 5000K,
Red, Green, Blue, UV

MAIN FEATURES:

- CREE LED, Max 1300 lumens
- Uses 1*18650 Li-ion rechargeable battery
- 8° super focus beam angle
- Easy operation with side titanium alloy button switch
- Battery indicator
- Water pressure resistant construction, depth rated to 150 meters

TECHNICAL PARAMETERS

Output: 1300 lumens(High), 380 lumens(Low)

Runtime: 1h 25min(High), 4h 30min(Low)

Beam Distance: 291m(On land) **Intensity:** 21164cd

Dimension: 142mm(Length) *25.5mm(Diameter) *35.5mm(Head)

Net weight: 136g(Excluding battery)

Accessories: 1*18650 3400mAh battery, 1*USB-Micro USB charging cable, Lanyard, Spare O-rings

MAIN FEATURES:

- CREE LED, Max 1000 lumens
- Uses 1*18650 battery
- 8° beam angle
- Magnetic controlled tail switch offers high waterproofness and easy operation underwater
- Standard included wrist strap fastens the flashlight to the back of your hand
- Water pressure resistant construction, depth rated to 150 meters



Tail Switch



Wrist Strap



18650 3400mAh
Micro-USB battery

TECHNICAL PARAMETERS

Output: 1000 lumens(High), 367 lumens(Low), 1000 lumens(Strobe)

Runtime: 2h 5min(High), 5h 45min(Low)

Beam distance: 253m(On land) **Intensity:** 16000 cd

Dimension: 146mm(Length) *25.4mm(Diameter) *40mm(Head)

Net weight: 183g(Excluding battery)

Accessories: 1*18650 3400mAh Micro-USB battery, 1*USB-Micro USB charging cable, Wrist strap, Spare O-rings, Lanyard

ORCATORCH D550

Max 1000 lumens



ORCATORCH D560

Max 630 lumens



MX05 Mask Mount
(Optional Accessory)

MAIN FEATURES:

- Mini dive light with only 9cm length, 47.5g
- CREE LED, Max 630 lumens
- 15° beam angle
- Uses 1*single AA battery or 1*14500 Li-ion battery
- Mechanical head rotary switch offers high reliability underwater
- Water pressure resistant construction, depth rated to 150 meters

TECHNICAL PARAMETERS

Output: 180 lumens(AA battery), 630lumens(14500 battery)
Runtime: 1h 25mins(AA battery), 1h(14500 battery)
Beam distance(On land): 73m(AA battery), 119m(14500 battery)
Intensity: 1320cd(AA battery), 3520cd(14500 battery)
Dimension: 92mm(Length) *20mm(Diameter) *24mm(Head)
Net weight: 47.5g(Excluding battery) **Accessories:** Spare O-rings, Lanyard, 1*AA battery

MAIN FEATURES:

- D560-GL green laser, D560-RL red laser
- Uses 1*single AA battery or 1*14500 Li-ion battery
- Mechanical head rotary switch offers high reliability underwater
- Water pressure resistant construction, depth rated to 150 meters



Laser



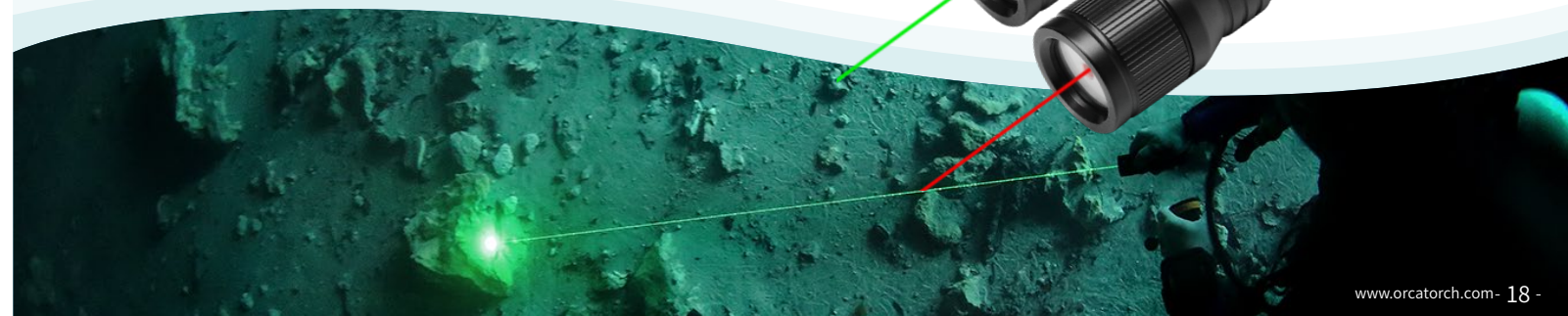
Rotary Switch On/Off

TECHNICAL PARAMETERS

Runtime(D560-GL): 5h 20min(AA battery), 5h(14500 battery)
Runtime(D560-RL): 10h 24min(AA battery), 17h 30min(14500 battery)
Beam distance: >1000m(On land)
Dimension: 92mm(Length) *20mm(Diameter) *24mm(Head)
Net weight: 50g(Excluding battery)
Accessories: 2*AA batteries, Lanyard, Spare O-rings

ORCATORCH D560-GL/RL

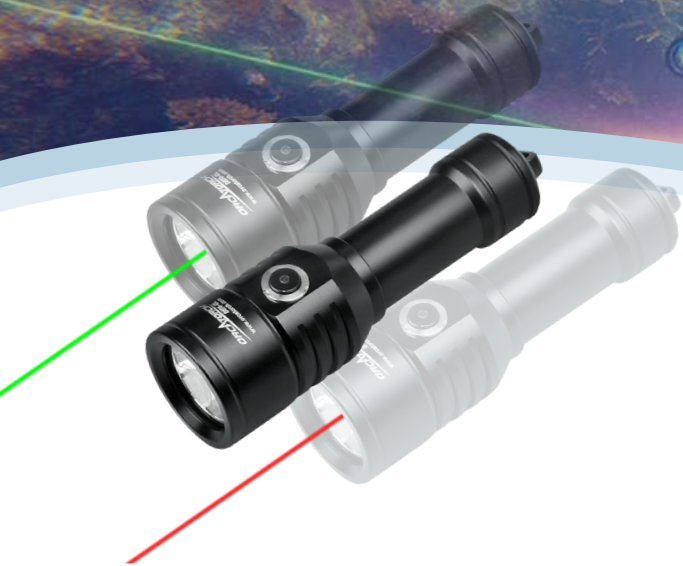
Recreational Laser Dive Lights



ORCATORCH D570-GL/RL

Max 1000 lumens

ORCATORCH



CREE LED+Laser



18650 Li-ion 3400mAh battery



Side Titanium Alloy
Button Switch

TECHNICAL PARAMETERS

Output: 1000 lumens(White)

Runtime: 1h 51mins(White), 13h36min(D570-GL laser), 80h(D570-RL laser)

Beam distance(On land): 281(White), >1000m(Laser)

Dimension: 134mm(Length) *26mm(Diameter) *40mm(Head)

Net weight: 176g(Excluding battery)

Accessories: 1*18650 Li-ion battery, USB to Micro USB Charger, Lanyard, Spare O-rings

MAIN FEATURES:

- CREE LED, Max 530 lumens
- Uses 3*AAA batteries, compatible with 1*18650 battery
- 6° beam angle
- Mechanically head rotary switch offers high reliability underwater
- Intelligent over-heat protection
- Water pressure resistant construction, depth rated to 150 meters



3*AAA Batteries



18650 Battery Optional

TECHNICAL PARAMETERS

Output: 480 lumens(3*AAA Batteries), 530lumens(1*18650 Li-ion battery)

Runtime: 2h 50mins(3*AAA Batteries), 3h 30mins(1*18650 Li-ion battery)

Intensity: 8000cd

Dimension: 128.5mm(Length) *27mm(Tube) *35.5mm(Head)

Net weight: 128g(Excluding batteries)

Accessories: 3*AAA batteries, Battery shield, Lanyard, Spare O-rings, Brand rubber bands

ORCATORCH D580

Max 530 lumens



ORCATORCH D700

Max 1700 lumens



Luminus LED



21700 Type-C 5000mAh
rechargeable battery

MAIN FEATURES:

- Luminus LED, Max 1700 lumens
- Uses 1*21700 5000mAh USB charging battery
- 6° beam angle
- Mechanically head rotary switch offers high reliability underwater
- Intelligent over-heat protection
- Water pressure resistant construction, depth rated to 150 meters

TECHNICAL PARAMETERS

Output: 1700 lumens

Runtime: 1h 50mins

Intensity: 27500 cd

Dimension: 142mm(Length)*27mm(Tube)*36mm(Head)

Net weight: 135g(Excluding battery)

Accessories: 1*21700 battery, USB-Type C charging cable, Lanyard, Spare O-rings

MAIN FEATURES:

- Luminus LED, Max 3000 lumens
- Uses 1*21700 5000mAh Type-C battery
- 6° beam angle
- Easy operation with side titanium alloy button switch
- Safe lock function, prevents mis-operation
- Intelligent over-heat protection
- Water pressure resistant construction, depth rated to 150 meters



Luminus LED



21700 Type-C 5000mAh
rechargeable battery



Side Titanium Alloy
Button Switch

TECHNICAL PARAMETERS

Output: 3000 lumens(Turbo), 1700 lumens(High), 800 lumens(Middle), 400 lumens(Low)

Runtime: /, 1h 40mins(High), 3h 40mins(Middle), 7h 40min(Low)

Intensity: 23750 cd

Dimension: 154.9mm(Length)*27mm(Tube)*36mm(Head)

Net weight: 152g(Excluding battery)

Accessories: 1*21700 battery, USB-Type C charging cable, Lanyard, Spare O-rings

ORCATORCH D710

Max 3000 lumens



ORCATORCH SD01/SD03

Dive Beacon



SD01 MAIN FEATURES:

- Powered by 1*AAA battery
- Strobe: Flash 3 times every 2 seconds
- Max Output 0.5lm
- Max Runtime 108 hours
- Dimension: 77.5(Length)*19mm(Diameter)
- Net Weight:23.5g
- Accessories: 1*AAA battery,O-rings, lanyard
- Available Colors:Blue, Red, Green, White, Orange
- Waterproof 150m



SD03 MAIN FEATURES:

- Compatible with 1*AA battery or 1*14500 battery
- Constant lighting, Strobe
- Max Output 50lm(White Beam)
- Max Runtime 250hours(Flashing Red)
- Dimension: 76.15mm (Length)*30.5mm (Head Dia)
- Net Weight: 50g
- Accessories: AA battery, Lanyard, User Manual
- Available Colors: White, Red, Blue, Green
- Waterproof 150m

TECHNICAL DIVE LIGHTS



NEW



P26

D720



P27

D511



P28

D620 V2.0



P29

D630 V2.0



P30

D850



P31

D860

MAIN FEATURES:

- Max 425000cd, beam distance of 1300 meters
- Uses 1*21700 5000mAh Type-C battery
- 3°~18°beam angle adjustable
- Easy operation with side titanium alloy push button switch
- Safe lock function prevents mis-operation
- Water pressure resistant construction, depth rated to 150 meters



Power display



Super Focus Beam Circle



21700 Type-C 5000mAh rechargeable battery

TECHNICAL PARAMETERS

Output: 350 lumens (High), 110 lumens (Low)

Runtime: 1h 35mins (High), 4h 4mins (Low)

Intensity: 425000 cd (High), 150000 cd (Low)

Dimension: 165.4 mm (Length) * 42.6mm (Head Diameter) * 26.4 mm (Tube Diameter)

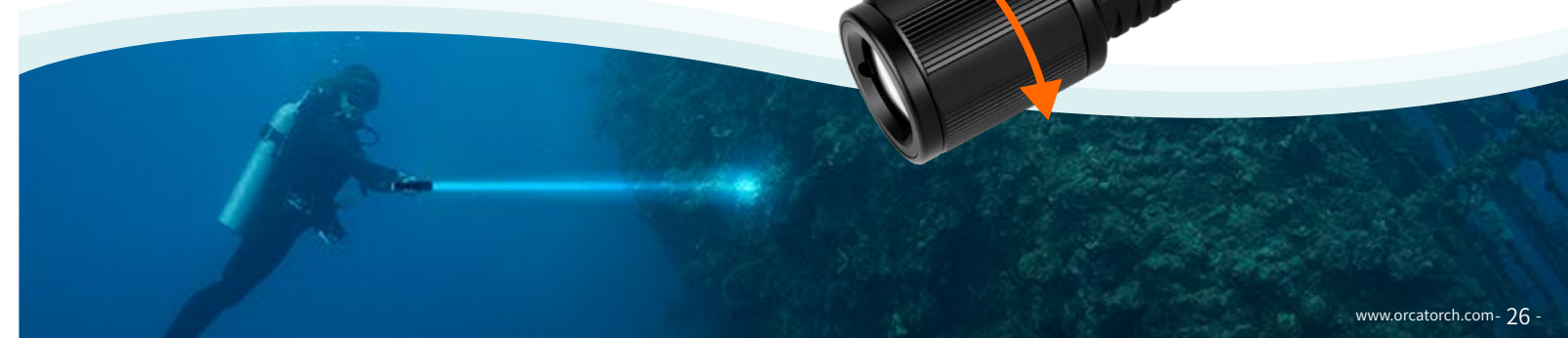
Net weight: 199g(Excluding batteries)

Accessories: 1*21700 battery, 1*USB-Type C charging cable, 1* Lanyard, 3* Spare O-rings

ORCATORCH D720

Beam Distance 1300m

Beam Angle Adjustable from 3°-18°



MAIN FEATURES:

- CREE LED, Max 2200 lumens
- Uses 2* 26650 batteries, compatible with 3*C batteries
- 8° beam angle
- Mechanically head rotary switch offers high reliability underwater
- Intelligent over-heat protection
- Water pressure resistant construction, depth rated to 150 meters



2*26650 Batteries or 3*C Batteries

TECHNICAL PARAMETERS

Output: 900 lumens(3*C Batteries), 2200 lumens(2*26650 Batteries)

Runtime: 5h 30mins(3*C Batteries), 3h 10mins(2*26650 Batteries)

Intensity: 21000cd(2*26650 Batteries), 6250cd(3*C Batteries)

Dimension: 197mm(Length) *34mm(Tube) *51mm(Head)

Net weight: 274g(Excluding batteries)

Accessories: 2*26650 batteries, Lanyard, Spare O-rings, Brand rubber bands, Charger

ORCATORCH D511

Max 2200 lumens



ORCATORCH D620 V2.0

Max 2700 lumens



ORCA TORCH



Titanium Alloy Switch



4*18650 Batteries

MAIN FEATURES:

- CREE LED, Max 2700 lumens
- Uses 4*18650 Li-ion batteries
- 14° beam angle
- Titanium alloy switch with battery indicator
- Easy-pack adjustable rotary Goodman handle
- Safe lock function prevents mis-operation
- Wide beam angle with external power supply design optional (for commercial diving). Welcome to inquire upon demand

TECHNICAL PARAMETERS

Output: 2700 lumens(High), 800 lumens(Middle), 150 lumens(Low)

Runtime: 2h 30mins(High), 8h 50mins(Middle), 37h(Low)

Beam distance: 260m(On land), **Intensity:** 16870cd, **Net weight:** 681g(Excluding battery)

Dimension(Light head): 83mm(Length) *50mm(Diameter)

Dimension(Canister): 113mm(Length) *54mm(Diameter)

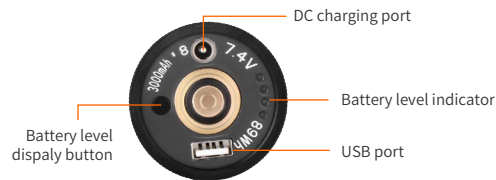
Accessories: 4* 18650 batteries, Charger, Handle, Spare O-rings

MAIN FEATURES:

- 5* CREE LEDs, Max 4000 lumens
- 90-180° angle adjustable cable, suitable for both back mount and side mount diving
- 7° super focus beam
- Titanium alloy switch with battery indicator
- 89Wh rechargeable large capacity battery pack
- 5 hours long runtime at brightest mode
- Battery can be used as a power bank
- Water pressure resistant construction, depth rated to 150 meters
- Safe lock function prevents mis-operation



Titanium Alloy Switch



Large Capacity Battery Pack With Battery Indicator

TECHNICAL PARAMETERS

Output: 4000 lumens(High), 1500lumens(Middle), 460lumens(Low)

Runtime: 5h(High), 7h 26mins(Middle), 23h 50mins(Low)

Beam distance: 514m(On land), **Intensity:** 66080cd, **Charging time:** 4h

Light Head: 96mm(Length) x 60mm(Diameter)

Canister: 209mm (Length) x 59mm(Diameter)

Net weight: 1.37kg(Including battery pack)

Accessories: Rechargeable battery pack, Goodman handle, Spare O-rings, Charger

ORCATORCH D630 V2.0

Max 4000 lumens



ORCATORCH D850

Max 2500 lumens



Titanium Alloy Side Button Switch



5* CREE LEDs



2 *26650 Batteries

MAIN FEATURES:

- 5* CREE LEDs, Max 2500 lumens
- Uses 2*26650 li-ion rechargeable batteries
- Super focus optical design provides 6 degrees beam angle
- Titanium alloy side button switch, anti-corrosion and stable
- Safe lock function prevents mis-operation
- Battery indicator displays the charging status.
- Water pressure resistant construction, depth rated to 150 meters

TECHNICAL PARAMETERS

Output: 2500 lumens(High), 1050 lumens(Middle), 300 lumens(Low)

Runtime: 3h 30mins(High), 5h(Middle), 13h 30min(Low)

Beam distance: 464m(On land), **Intensity:** 53900cd

Dimension: 228mm(Length) *34mm(Diameter) *60mm(Head)

Net weight: 453g(Excluding battery)

Accessories: 2*26650 batteries, Charger, Lanyard, Spare O-rings

MAIN FEATURES:

- 3* CREE LEDs, Max 4200 lumens
- Direct charging system with a short charging time of 3.5 hours
- 10° beam angle
- Replaceable INR battery pack
- Titanium alloy tail button switch, easy operation
- Safe lock function avoids misoperation
- Specially designed handle, easy to carry and assemble
- Battery indicator
- Water pressure resistant construction, depth rated to 150 meters



Battery Indicator



INR Battery Pack

TECHNICAL PARAMETERS

Output: 4200 lumens(High), 1500 lumens(Middle), 500lumens(Low)

Runtime: 1h(High), 4h 30min(Middle), 14h(Low)

Beam distance: 310m(On land), **Intensity:** 24000cd, **Charging time:** 3.5h

Dimension: 189mm(Length) * 51mm(Diameter) * 64mm(Head)

Net weight: 773g

Accessories: Battery pack, Home charger, Lanyard, Spare O-rings

ORCATORCH D860

Max 4200 lumens



UNDERWATER VIDEO LIGHTS

ORCATORCH



NEW



P34

D710V

NEW



P35

D530V



P36

D900V



P37

D910V



P38

D950V 2.0

ORCATORCH D710V

Max 2000 lumens



Tri-color LED
(White-Red-UV)



21700 Type-C 5000mAh
rechargeable battery



Side Titanium Alloy
Button Switch

MAIN FEATURES:

- Neutral white max 2000 lumens, 120° super wide beam angle
- Use 1 x 21700 Type-C Rechargeable battery
- Easy operation with side titanium alloy button switch
- Battery indicator
- Safe lock function, prevents mis-operation
- Water pressure resistant construction, depth rated to 150 meters

TECHNICAL PARAMETERS

Output: 2000 lumens (White - High), 600 lumens (White-Low), 125 lumens (Red), 2.5 lumens (UV)

Runtime: 1h 30mins (White-High), 3h 5mins (White-Low), 4h 30mins (Red), 6h 40mins (UV)

Dimension: 154.9 mm (Length) * 36mm (Head Diameter) * 27 mm (Tube Diameter)

Net weight: 146g

Accessories: 1*21700 5000mAh Rechargeable Battery, 1* USB Type-C Charging Cable, 1* Lanyard, 3* Spared O-rings, 1* ZJ18 Ball Joint Bracket

MAIN FEATURES:

- CREE LED, Max 1200 lumens
- Uses 1*18650 Li-ion rechargeable battery
- 120° super wide beam angle
- Easy operation with side titanium alloy button switch
- Battery indicator
- Water pressure resistant construction, depth rated to 150 meters

TECHNICAL PARAMETERS

Output: 1200 lumens(High), 290 lumens(Low)

Runtime: 1h 24min(High), 4h 36min(Low)

Dimension: 142mm(Length) *25.5mm(Diameter) *35.5mm(Head)

Net weight: 145g(Excluding battery)

Accessories: 1*USB rechargeable 18650 Li-ion battery, USB charging cable, Lanyard, Spare O-rings

ORCATORCH D530V

Max 1200 lumens



Single LED Options: Cold White, Natural White 3a 5000k, Red, Green, Blue, UV395



ZJ18
(Optional Accessory)



21700 Type-C 5000mAh
rechargeable battery



Titanium Alloy Switch

ORCATORCH D900V

Max 2200 lumens



MAIN FEATURES:

- Max 2200 Lumens
- Red, UV, Neutral white with 120° flood beam, cool white with 8° spot beam
- Magnetic fast charging of 2.5hrs
- Dual titanium alloy switch controls different lighting sources independently
- Water pressure resistant construction, depth rated to 150 meters



Magnetic Fast Charging System



CREE LED

UV lights

Red lights

Neutral white with 120° beam

Cool white with 8° spot beam

TECHNICAL PARAMETERS

Output/Runtime(Flood beam): 2200 lumens/2h 45min(High), 600 lumens/4h 20min(Low)

Output/Runtime(Spot beam): 820 lumens/4h(High), 250 lumens/18h(Low)

Output/Runtime: 250 lumens/7h(Red), -/5h(UV)

Beam distance: 230m(On land), **Charging time:** 2.5h

Dimension: 129.5mm(Length) *45mm(Diameter) *53mm(Head)

Net weight: 430g

Accessories: Home charger, Ball joint, OrcaTorch rubber ring, Spare O-rings

MAIN FEATURES:

- CREE COB LED, Max 5000 lumens
- 120° wide beam angle
- Color temperature 5700K, CRI 92
- Magnetic fast charging of 2.5hrs
- Dual titanium alloy switch
- Water pressure resistant construction, depth rated to 150 meters



Magnetic Fast Charging System

COB LED 5700K CRI 92

TECHNICAL PARAMETERS

Output: 5000 lumens(High), 2000lumens(Middle), 500lumens(Low)

Runtime: 50mins(High), 2h 10min(Middle), 8h 50mins(Low)

Charging time: 2.5h

Dimension: 129.5mm(Length) *45mm(Diameter) *53mm(Head)

Net weight: 430g

Accessories: Home charger, Ball joint, OrcaTorch rubber ring, Spare O-rings

ORCATORCH D910V

Max 5000 lumens



ORCATORCH D950V 2.0

Max 12000 lumens



ORCA TORCH



4 Levels Adjustable Brightness



Magnetic Fast Charging System

MAIN FEATURES:

- CREE COB LED, Max 12000 lumens
- Spherical toughened glass optical lens design, 120° wide beam angle
- Color temperature 5700K, CRI 92
- Built-in replaceable large capacity battery pack
- Tail Magnetic Charging
- Tail LED indicator instantly displays the battery's remaining power
- Water pressure resistant construction, depth rated to 150 meters

TECHNICAL PARAMETERS

Output: 12000 lumens(Turbo), 6200 lumens(High), 3000 lumens(Middle), 1100 lumens(Low)

Runtime: 1h 12mins(Turbo), 1h 54mins(High), 3h 50mins(Middle), 10h(Low)

Charging time: 3h 10min

Dimension: 255mm(Length) *53mm(Diameter) *72mm(Head)

Net weight: 1059g(Including battery)

Accessories: Battery pack, Home charger, Ball joint, OrcaTorch rubber ring, Spare O-rings



01 21700

21700 Type-C rechargeable
Battery 5000mAh



02 18650

18650 Micro-USB Rechargeable
Battery 3400mAh



03 18650

18650 Rechargeable
Battery 3400mAh



04 14500

14500 Micro-USB Rechargeable
Battery 750mAh



07 ZJ18

Ball joint Bracket



08 Bag

Waterproof Dry Bag(5L)



09 MX05

Mask Mount



10 H620

Goodman Handle

ACCESSORIES



05 26650

26650 Rechargeable Battery-5000mAh



06 SH01/02/03

Snap Hook



11 Snoot

Snoot for D530V



12 HM01

Helmet Mount



13 WS01

Wrist Strap



14 WS02

Wrist Strap



15 AS01

Arm Strap



16 New Arrival

Compact U/W Camera Tray
160mm(L)*55mm(W)



17 ZJ12

Handle



18 ZJ13/ZJ14

Ball Joint Clamp



SPECIFICATIONS

RECREATIONAL DIVE LIGHTS							
Model	Max Output	Modes	Max Runtime	Waterproof	Dimension(mm)	Net Weight	Battery
TD01	1200 lumens	5	8h 45min	150m	97.8x32	129g	1*18650
D520	1000 lumens	1	2h	150m	134.5x24x30	113.5g	1*18650/2*CR123A/2*16340
D530	1300 lumens	2	4h 30min	150m	142x25.5x35.5	136g	1*18650
D550	1000 lumens	3	5h 45min	150m	146x25.4x40	183g	1*18650
D560	630 lumens	1	1h 25min	150m	92x20x24	47.5g	1*AA/1*14500
D560-GL/RL	/	1	5h/17h 30min	150m	92x20x24	50g	1*AA/1*14500
D570-GL/RL	1000 lumens	2	13h 36min/80h	150m	134x26x40	176g	1*18650
D580	530 lumens	1	3h 30min	150m	128.5x27x35.5	125g	1*18650/3*AAA
D700	1700 lumens	1	1h 50min	150m	142x27x36	135g	1*21700
D710	3000 lumens	4	7h 42min	150m	154.9x27x36	152g	1*21700
SD01	0.5 lumens	1	108h	100m	77.5x19	23.5g	1*AAA
SD03	100 lumens	8	220h	150m	76x31	50g	1*14500/AA
TECHNICAL DIVE LIGHTS							
Model	Max Output	Modes	Max Runtime	Waterproof	Dimension(mm)	Net Weight	Battery
D511	2200 lumens	1	5h 30min	150m	197x34x51	274g	2*26650/3*C
D620 V2.0	2700 lumens	3	37h	150m	80x50(Head)/113x54(Canister)	681g	4*18650
D630 V2.0	4000 lumens	3	23h 50min	150m	96x60(Head)/209x59(Canister)	1370g	Battery Pack

D850	2500 lumens	3	13h 30min	150m	228x34x60	453g	2*26650
D860	4200 lumens	3	14h	150m	189x51x64	773g	Battery Pack
UNDERWATER VIDEO LIGHTS							
Model	Max Output	Modes	Max Runtime	Waterproof	Dimension(mm)	Net Weight	Battery
D710V	2000 lumens	4	6h 40min	150m	154.9x27x36	146g	1*21700
D530V	1200 lumens	2	4h 36min	150m	142x25.5x35.5	145g	1*18650
D900V	2200 lumens	6	18h	150m	129.5x45x53	430g	Battery Pack
D910V	5000 lumens	3	8h 50min	150m	129.5x45x53	430g	Battery Pack
D950V 2.0	12000 lumens	4	10h	150m	255x53x72	1059g	Battery Pack